



CONTACTS

Corporate Headquarters
 Country View Family Farms
 1301 Fulling Mill Road
 Suite 3000
 Middletown, PA 17057
 United States

ABILITIES

Sow Farms:

A Sow Farm is the starting point for any pig farm. Mother pigs are bred and give birth to a litter of piglets at these farms.

Nursery Farms:

A Nursery Farm is where young piglets are given a strong head start. After leaving their mothers for the first time, they will grow to be 60 pounds while in the nursery.

Finisher Farms:

A finishing farm is the location where CVFF pigs grow to maturity and are prepared for market.



EMPLOYMENT



Positions Available:

Post Early Care Lead
 Gestation Lead
 Breeding and Gilt Development Lead

14

COUNTRY VIEW FARMS

MIDDLETOWN, PENNSYLVANIA, USA

POSITION INFORMATION

Post Early Care Lead

Salary \$28k-\$46k

Responsibilities

- Administrative & Planning
- Communication
- Production Management
- Talent Management

Qualifications

- Bachelor's degree or an equivalent four year degree; or a minimum of five years related experiences and/or training; or equivalent combination of education and experience
- Ability to define problems, collect data, establish facts, and draw valid conclusions
- Must understand that the Company is a producer of high quality pork and be supportive of the mission of raising swine for meat
- Must be willing to learn and perform the responsibilities described within CVFF's process manual
- Must be able to work in a stressful environment
- Must be able to lift up to 50 pounds

Gestation Lead

Salary-\$28k-\$46K

Responsibilities

- Production Management
- Communication
- Talent Management
- Talent Management
- Team CVFF

Qualifications

- Bachelor's degree or an equivalent four year degree; or a minimum of five years related experiences and/or training; or equivalent combination of education and experience
- Ability to define problems, collect data, establish facts, and draw valid conclusions
- Must understand that the Company is a producer of high quality pork and be supportive of the mission of raising swine for meat
- Must be willing to learn and perform the responsibilities described within CVFF's process manual
- Must be able to work in a stressful environment
- Must be able to lift up to 50 pounds

14

COUNTRY VIEW FARMS

MIDDLETOWN, PENNSYLVANIA, USA

Breeding and Gilt Development Lead

Salary \$28k-\$46

Responsibilities

- Production Management- 50%
- Communication 15%
- Talent Development- 15%
- Planning - 15%
- Team CVFF- 5%

Qualifications

REQUIRED SKILLS:

- The ability to: set, pursue and attain achievable goals, regardless of obstacles or circumstances; identify actions necessary to achieve task completion; set achievable goals, maintain direction in spite of obstacles; stay on course in times of difficulty The ability to be responsible for the consequences of one's own actions and decisions: taking responsibility for these decisions and not shifting focus or blame or poor performance somewhere else or on others.
- The ability to identify actions necessary to achieve task completion and to obtain results: the ability to meet schedules, deadlines, quotas, and performance goals. Being responsible for the consequences of the actions of those whom you manage.
- The ability to understand the needs, interests, strengths, and weaknesses of others, and to utilize this information for contributing to the growth and development of others. The ability to organize and motivate people to accomplish goals while creating a sense of order and direction.
- The ability to: personally affect others' actions, decisions, opinions or thinking; instill a sense of value for the task at hand; develop and invoke a self-starting attitude in others; understand the needs and desires of others.
- The ability to take personal responsibility and action toward self-improvement and learning; a measure of how strongly a person feels the need to achieve.

POSITION QUALIFICATIONS:

- Bachelor's degree or an equivalent four year degree; or a minimum of five years related experiences and/or training; or equivalent combination of education and experience
- Ability to define problems, collect data, establish facts, and draw valid conclusions
- Must understand that the Company is a producer of high quality pork and be supportive of the mission of raising swine for meat
- Must be willing to learn and perform the responsibilities described within CVFF's process manual
- Must be able to work in a stressful environment
- Must be able to lift up to 50 pounds

14

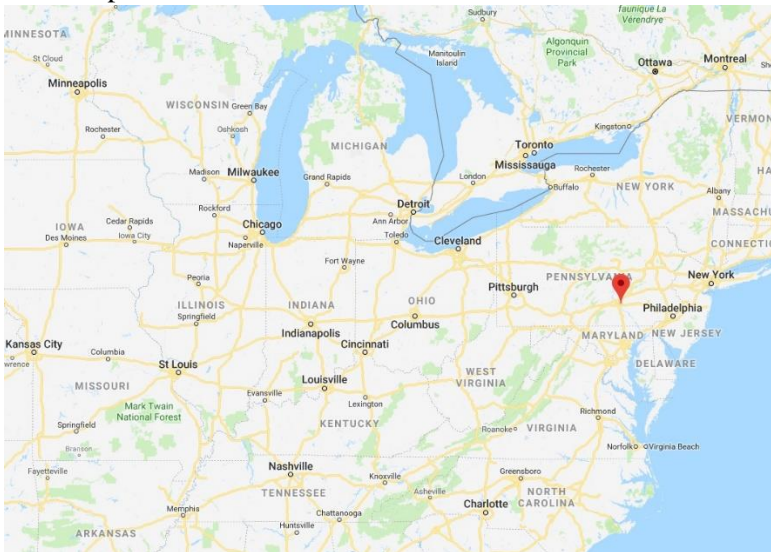
COUNTRY VIEW FARMS

MIDDLETOWN, PENNSYLVANIA, USA

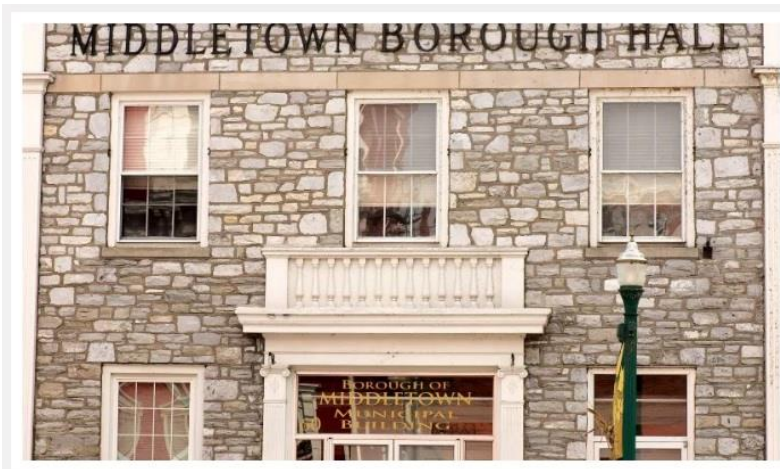
SETTLEMENT SERVICES

Settlement Service Representatives
Not Currently Available

Facility Location and Environment
Area Map



Middletown Borough – Dauphin County’s Oldest Community



Welcome
to Dauphin County's
Oldest Community.

Founded in 1755, Middletown is located on the east shore of the Susquehanna River, just south of Harrisburg, PA.

Area Information

Middletown is a borough in Dauphin County, Pennsylvania, United States, on the Susquehanna River, 10 miles southeast of Harrisburg. As of the 2010 census it had a population of 8,901.

- Populations: 22,161 (up 6.3% compared to last year)
- Area Code: 17057
- Area: 2,077 Square miles
- Median Age: 38.6
- Unemployment Rate: 5.0% (U.S. avg. is 5.20%)
Middletown (zip 17057) jobs have increased by 2.26 percent
- Median Home Price: \$129,800

Cost of Living

Middletown (zip 17057), Pennsylvania cost of living is 92.40.

COST OF LIVING	Middletown, Pennsylvania	United States
Overall	92	100
Grocery	98.9	100
Health	94	100
Housing	70	100
Utilities	114	100
Transportation	107	100
Miscellaneous	103	100

Airport Information

Harrisburg International Airport

(<http://www.flyhia.com/>)

717-948-3900

510 Airport Drive, Middletown, PA 17057

9 minutes from the Country View Family Farm

Banking Information

Wells Fargo Bank - 310 W Main St, Middletown, PA 17057

M&T Bank - 120 S Union St, Middletown, PA 17057

To open a bank account

- Personal information, including address, phone number, and Social Security number
- Driver's license
- Previous address if at current address less than two years
- Co-applicant information and identification if applicable (please note that your co-applicant must be available to review the application, agree to the terms and conditions, and to answer security questions to confirm their identity)
- All applicants must be 18 years of age and U.S. Residents
- Initial Deposit

Health Insurance Information

- Group Health Insurance provided (Dental and Vision plan included)

Residence Information

Village of Pineford Apartments

1900 Pineford Dr., Middletown, PA 17057

Water, Sewer, Trash are all included with your rent.

844-269-0944

21 Clinton Ave Middletown, PA 17057

This 2nd floor apartment features a quiet neighborhood setting within one mile from the Penn State Harrisburg campus.

717-298-7623

14

COUNTRY VIEW FARMS

MIDDLETOWN, PENNSYLVANIA, USA

1300 Overlook Rd, Middletown, PA 17057

END-UNIT TOWNHOME located in Middletown within Dauphin County. Home accommodates 3-Bedrooms and 2.5- Bathrooms.

717-340-2365

School Information

Middletown Area High School is located at 1155 North Union Street, Middletown.

In 2015, enrollment had declined to 647 pupils in 9th through 12th grades, with 40.9% of pupils eligible for a free lunch due to family poverty. Additionally, 15% of pupils received special education services, while 6.4% of pupils were identified as gifted. The school employed 49 teachers. Per the Pennsylvania Department of Education, 100% of the teachers were rated "Highly Qualified" under the federal No Child Left Behind Act.

Middletown Area Middle School is located at 215 Oberlin Road, Middletown.

In 2015, enrollment was 526 pupils, in grades 6th through 8th, with 51% of pupils eligible for a free lunch due to family poverty. Additionally, 17.6% of pupils received special education services, while 3% of pupils were identified as gifted. According to a 2014 report by the Pennsylvania Department of Education, 100% of its teachers were rated "Highly Qualified" under No Child Left Behind.

Lyall J. Fink Elementary School is located at 150 North Race Street, Middletown.

In 2015, the school's enrollment was 221 pupils in grades kindergarten through 5th, with 76% of pupils receiving a federal free or reduced-price meals due to family poverty. Additionally, 13.5% of the pupils receive special education services, while none are identified as gifted. According to a report by the Pennsylvania Department of Education, 100% of the teachers were rated highly qualified under No Child Left Behind. The school provides full-day kindergarten. The school remains a federally designated Title I school.

John C. Kunkel Elementary School is located at 2401 Fulling Mill Road, Middletown.

In 2015, the school's enrollment was 433 pupils in grades kindergarten through 5th, with 39% of pupils receiving a federal free or reduced-price meals due to family poverty. Additionally, 10% of the pupils receive special education services, while 1% are identified as gifted. According to a report by the Pennsylvania Department of Education, 100% of the teachers were rated highly qualified under No Child Left Behind. The school provides full-day kindergarten. The school is a federally designated Title I school.

Robert G. Reid Elementary School is located at 201 Oberlin Road, Middletown.

In 2015, the school's enrollment was 466 pupils in grades kindergarten through 5th, with 60% of pupils receiving a federal free or reduced-price meals due to family poverty. Additionally, 16% of the pupils receive special education services, while less than 1% are identified as gifted. According to a report by the

14

COUNTRY VIEW FARMS

MIDDLETOWN, PENNSYLVANIA, USA

Pennsylvania Department of Education, 100% of the teachers were rated highly qualified under No Child Left Behind. The school provides full-day kindergarten. The school is a federally designated Title I school.

Emergency Facilities / Hospitals

Penn State Medical Group Middletown
3100 Schoolhouse Rd, Middletown, PA 17057
Phone number (717) 948-5180

Pinnacle Health
409 S 2nd St., Harrisburg, PA 17104
Phone number (717) 231-8900

Hershey Medical Center
500 University Dr., Hershey, PA 17033
Phone number (717) 531-8521

Police Department Information

Middletown Police Department
300 E Emaus St, Middletown, PA 17057
<https://middletownborough.com/government/police-department/>
(717) 902-0627

Driver's License Information

PennDOT, Riverfront Office Center, Driver Licensing
1101 S. Front St., Harrisburg, PA 17104
<http://www.dmv.pa.gov/Pages/default.aspx>
717-412-5300
(Call Center Hours: Monday through Friday(except holidays), from 8:00 a.m. – 5:00 p.m. E.T.)